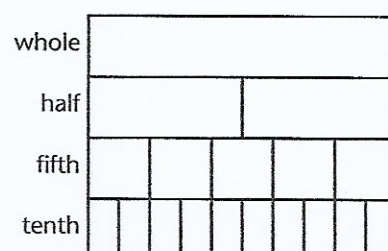
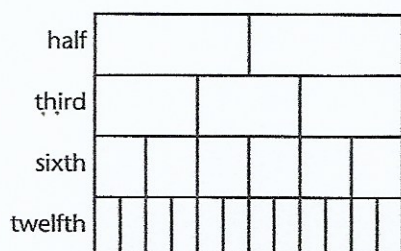
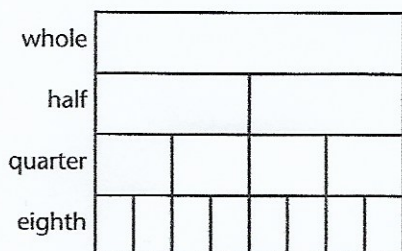
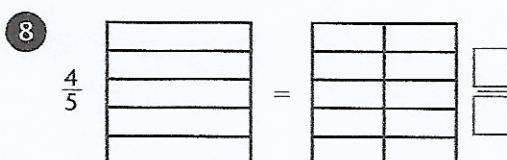
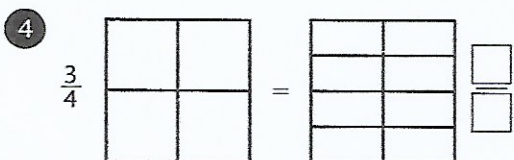
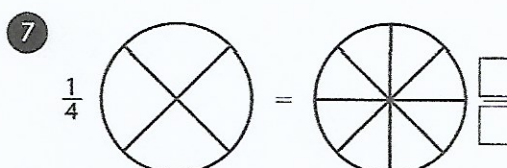
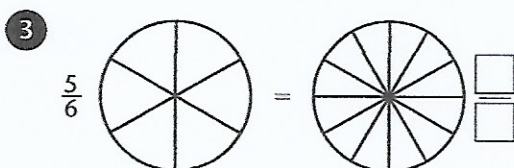
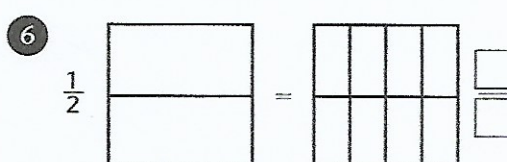
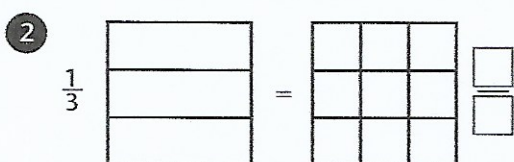
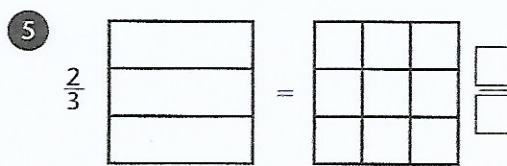
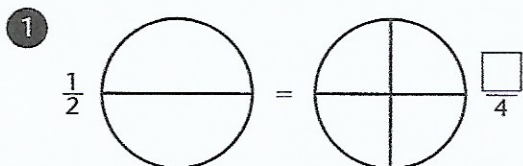


Colour in the diagrams to show each pair of equivalent fractions.
Write the missing fraction.



Use the fraction charts to complete the equivalent fractions.

9 $\frac{1}{6} = \frac{\square}{12}$

11 $\frac{1}{4} = \frac{\square}{12}$

13 $\frac{1}{2} = \frac{\square}{10}$

15 $\frac{2}{3} = \frac{\square}{9}$

10 $\frac{2}{5} = \frac{\square}{10}$

12 $\frac{2}{3} = \frac{\square}{6}$

14 $\frac{3}{4} = \frac{\square}{8}$

16 $\frac{4}{5} = \frac{\square}{10}$